

leather seats & interiors 2012

ECOPELLE/ECOLEATHER

(4) Ignifugo/Fire-retardant



(3+) 679 (4) 646



(3+) 691 (4) 647



(3+) 690 (4) 659



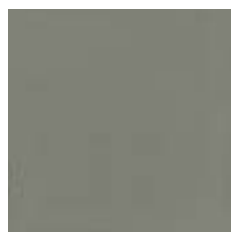
(3+) 687 (4) 650



(3+) 677 (4) 667



(3+) 684 (4) 648



(3+) 689 (4) 645



(3+) 688 (4) 666



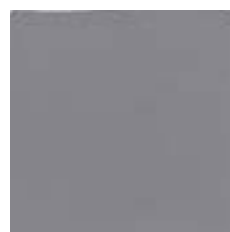
(3+) 685 (4) 665



(3+) 678 (4) 654



(3+) 670 (4) 649



(3+) 693 (4) 669



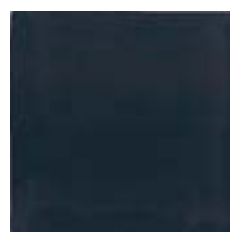
(3+) 682 (4) 668



(3+) 672 (4) 658



(3+) 673 (4) 661



(3+) 675 (4) 657



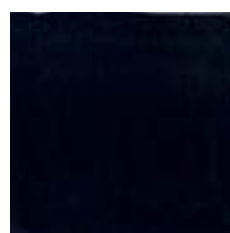
(3+) 680 (4) 651



(3+) 671 (4) 662



(3+) 674 (4) 664



(3+) 676 (4) 663

ECOSUEDE

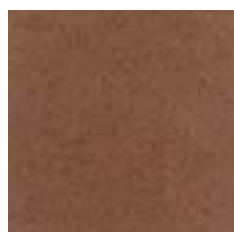
Nero/Black cod. (3+) 757



(3+) 752



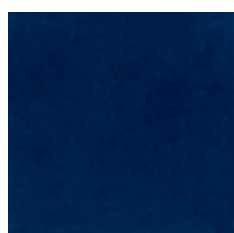
(3+) 756



(3+) 753



(3+) 755

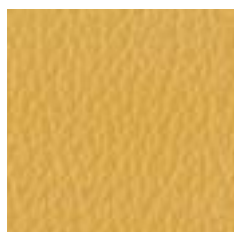


(3+) 754

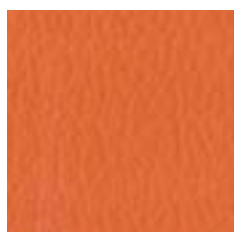
PELLE/LEATHER



(6) 628



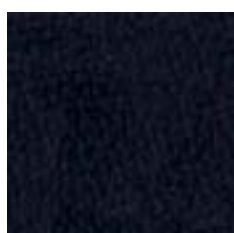
(6) 618



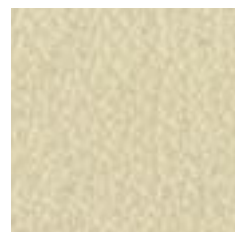
(6) 630



(6) 615



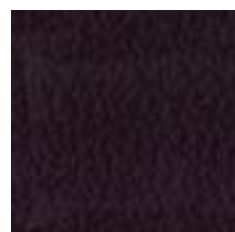
(6) 605



(6) 629



(6) 619



(6) 632



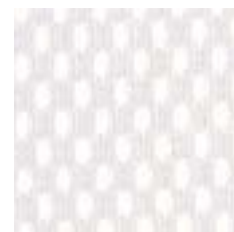
(6) 611



(6) 613

RETE/MESH

Nero/Black cod. 820



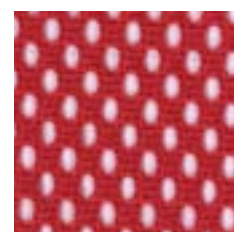
821



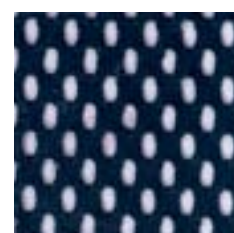
822



825



824



823

CARATTERISTICHE FEATURES

ECOPELLE

Composizione	37% Cotone; 63% Poliuretano
Peso	480 (g/mq)
Altezza	140 cm
Martindale (EN ISO 5470)	150.000 cicli
Xenotest	(scala dei blu) 5/6
Ignifugità	solo cat. 4: classe 1 (UNI9175); CRIB 5
Trattamento	Trattamento ULTRA-FRESH antibatterico, antiacaro determina freschezza igienica e duratura.
Pulizia	Disciogliere la macchia con alcol etilico (liquido incolore), tamponare, trattare successivamente con una soluzione di detergente neutro e risciacquare bene.
Categoria Prezzo	3+ / 4 (Classe 1)

ECOSUEDE

Composizione	30% Cotone; 70% PES
Peso	450 (g/mq)
Altezza	140 cm
Martindale (EN ISO 12947-4)	30.000 cicli
Xenotest	(scala dei blu) 4
Ignifugità	non ignifuga
Pulizia	Macchie lievi: passare la superficie con un panno umido in microfibra; macchie ostinate: sciogliere tempestivamente la macchia con alcol etilico diluito in acqua al 20%, tamponare e trattare successivamente con una soluzione di detergente neutro e risciacquare bene.
Categoria di Prezzo	3+

PELLE

Pelle bovina di prima qualità. La pelle è un elemento naturale, quindi eventuali imperfezioni confermano la qualità del prodotto. Per la pulizia non usare prodotti a base di alcol.	
Categoria di Prezzo	6

RETE

Composizione	100% Poliestere
Peso	360 (g/mq)
Altezza	150 cm
Martindale (EN ISO 12947-2)	100.000 cicli
Xenotest	(scala dei blu) 5
Pulizia	Trattare con una soluzione di acqua e sapone neutro e risciacquare bene. Usare con regolarità l'aspirapolvere a beccuccio liscio, senza spazzolare.

ECOLEATHER

Composition	37% Cotton; 63% Polyurethane
Weight	480 (g/sm)
Width	140 cm
Martindale (EN ISO 5470)	150.000 cycles
Xenotest	(blue scale) 5/6
Flammability	only cat. 4: class 1 (UNI9175); CRIB 5
Treatment	ULTRA-FRESH treatment: antimicrobial, antiacarus, it determines durable hygienic freshness.
Cleaning	Dissolve any stains with clear ethyl alcohol, dab and then treat with a neutral detergent solution. Rinse well.
Price Category	3+ / 4 (Class 1)

ECOSUEDE

Composition	30% Cotton; 70% PES
Weight	450 (g/sm)
Width	140 cm
Martindale (EN ISO 12947-4)	30.000 cycles
Xenotest	(blue scale) 4
Flammability	not fire-retardant
Cleaning	Light stains: clean the surface using a microfiber damp cloth or a neutral detergent solution, rinse with water afterwards. Harder stains: dissolve the stain quickly by using ethylic alcohol diluted in water at 20%, dab, clean with neutral detergent solution and then rinse again.
Price Category	3+

LEATHER

High quality bovine leather. Leather is a natural material, any slight differences in appearance confirm the quality of the product. When cleaning do not use alcohol-based products.	
Price Category:	6

MESH

Composition	100% Polyester
Weight	360 (g/mq)
Width	150 cm
Martindale (EN ISO 12947-2)	100.000 cycles
Xenotest	(blue scale) 5
Cleaning	Dissolve any stains with water and mild soap. Rinse well. Use the vacuum-cleaner regularly, don't brush.

Ares Line SpA
Carré - Italy
info@aresline.com

Ares Line LatinoAmerica SA
Showroom São Paulo
info@aresline.com.br

Showroom Toronto
northamerica@aresline.com

Showroom Milano
milano@aresline.com

Showroom Paris
paris@aresline.com

www.aresline.com



- Consigliata Recommended ■
- Sconsigliata Not Recommended ▲
- Non disponibile Not available ×

COMBINAZIONI COMBINATIONS

	Ecopelle Ecoleather	Ecosuede	Pelle Leather	Rete Mesh
Categoria Category	3+ / 4	3+	6	
Programma Series				
Link Eura	■	■	■	■
Amadeus	■	■	■	×
Trendy Teorema Tiffany Millennium Venus Jolly Naxos	■	■	■	×
Zero7 Zero9	■	▲	×	■
Mya Club Papillon	■	▲	■	×
PF3	■	■	■	×
Genesis Metropolitan Concerto Tempo Royale	■	×	■	×
Eidos Omnia Woody Gipsy Smart Matrix Hip-Up	■	×	▲	×